



MORE TECHNOLOGY, SAFETY & QUALITY LESS HUNGER

From post-harvesting to consumer



2 0 0 9

PROCESSING, PACKAGING
AND MATERIAL HANDLING

FIERA MILANO
MILAN - ITALY, 24-28 MARCH 2009

***Sri Lanka Project: feeding programme
for mothers and children***



TRIPOSHA PRODUCTION



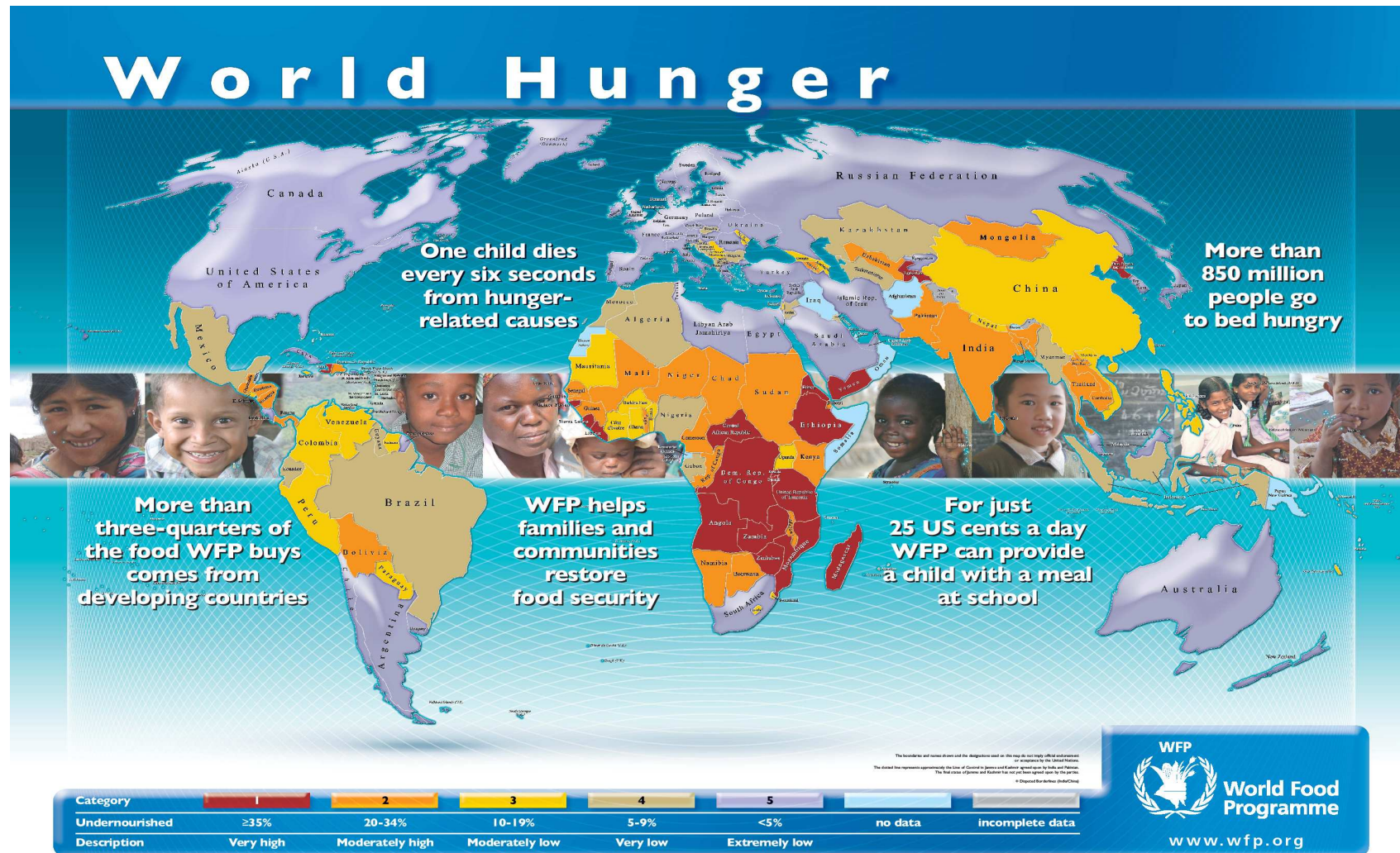
2 0 0 9

PROCESSING, PACKAGING
AND MATERIAL HANDLING

FIERA MILANO
MILAN - ITALY, 24-28 MARCH 2009

*Proposal For An Integrate Project For The
Improvement Of The Production Of The Row
Material And The Final Product*

THE PROBLEM: A PROTRACTED EMERGENCY



Sources: The State of Food Insecurity in the World 2006, Food and Agriculture Organization of the United Nations and FAO/STAT.
© 2007 United Nations World Food Programme

The hunger dimension in the world

- more than 950 million of people in the world do not have enough to eat
- WFP reaches every year more than 85 million of people worldwide
- Each year WFP distributes more than 3 million of metric tons of food
- Feeding a child at school for one year costs 40 Euros

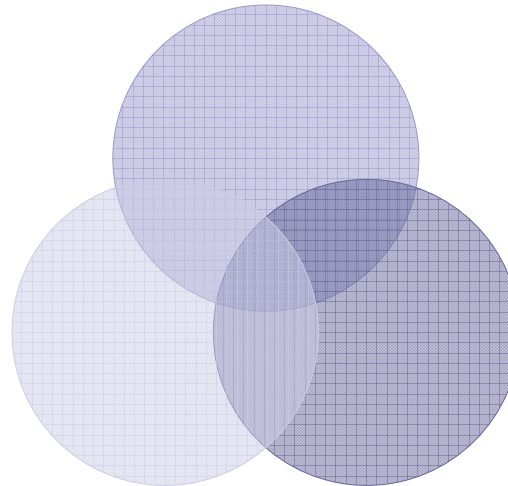
- THE RELATION **1 / 10** BETWEEN COSTS AND GLOBAL NEEDS UNDERLINE THE NECESSITY OF TAKING NEW MEASURES:
- ONE OF THEM IS THE FOCUS ON DEVELOPMENT TOOLS THAT COULD LEAD TO SELF-SUSTAINIBILITY
- FROM THIS STANDPOINT STARTS THE COOPERATION BETWEEN TWO GIANTS

LIONS AND WFP



FOOD SECURITY

AVAILABILITY



UTILIZATION

ACCESS

PROBLEMS

Small Producers of soya and maize

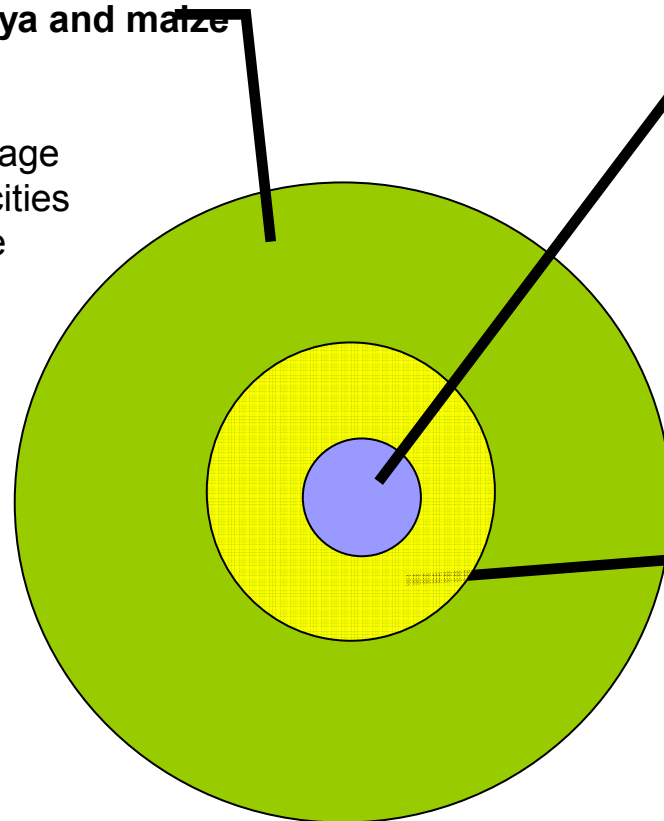
- Lack of tools
- Poor seeds
- Lack or insufficient storage
- Limited technical capacities
- Excess utilization of the natural resources

Triposha factory

- Insufficient storage capacities
- Limited production capacities (50%)
- Obsolete machineries
- Lack of spare parts
- Dependent from the raw materials

Local Capacities

- Lack or insufficient Organization of the small farmers
- Transport difficulties
- Low storage capacities
- Marketing problems

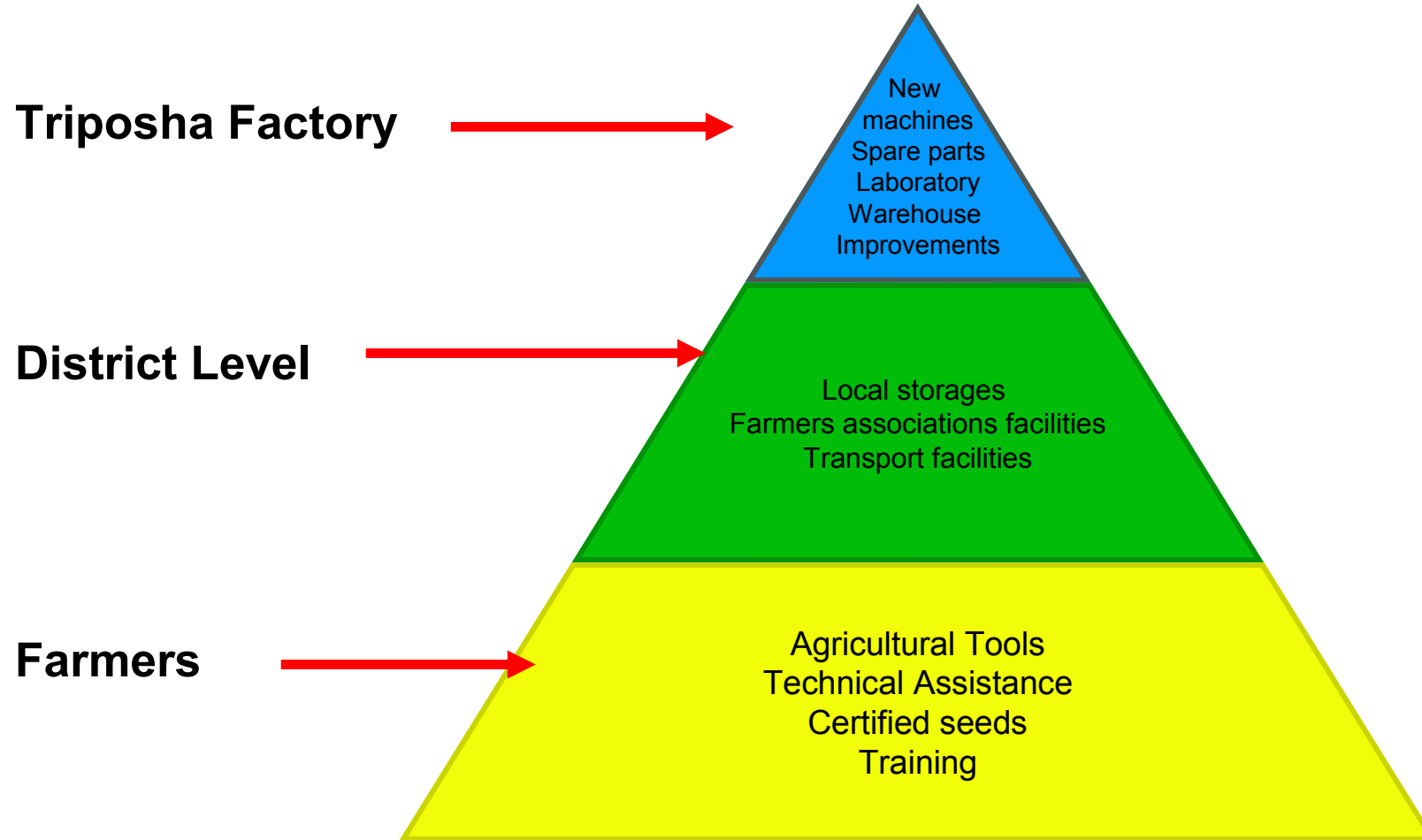


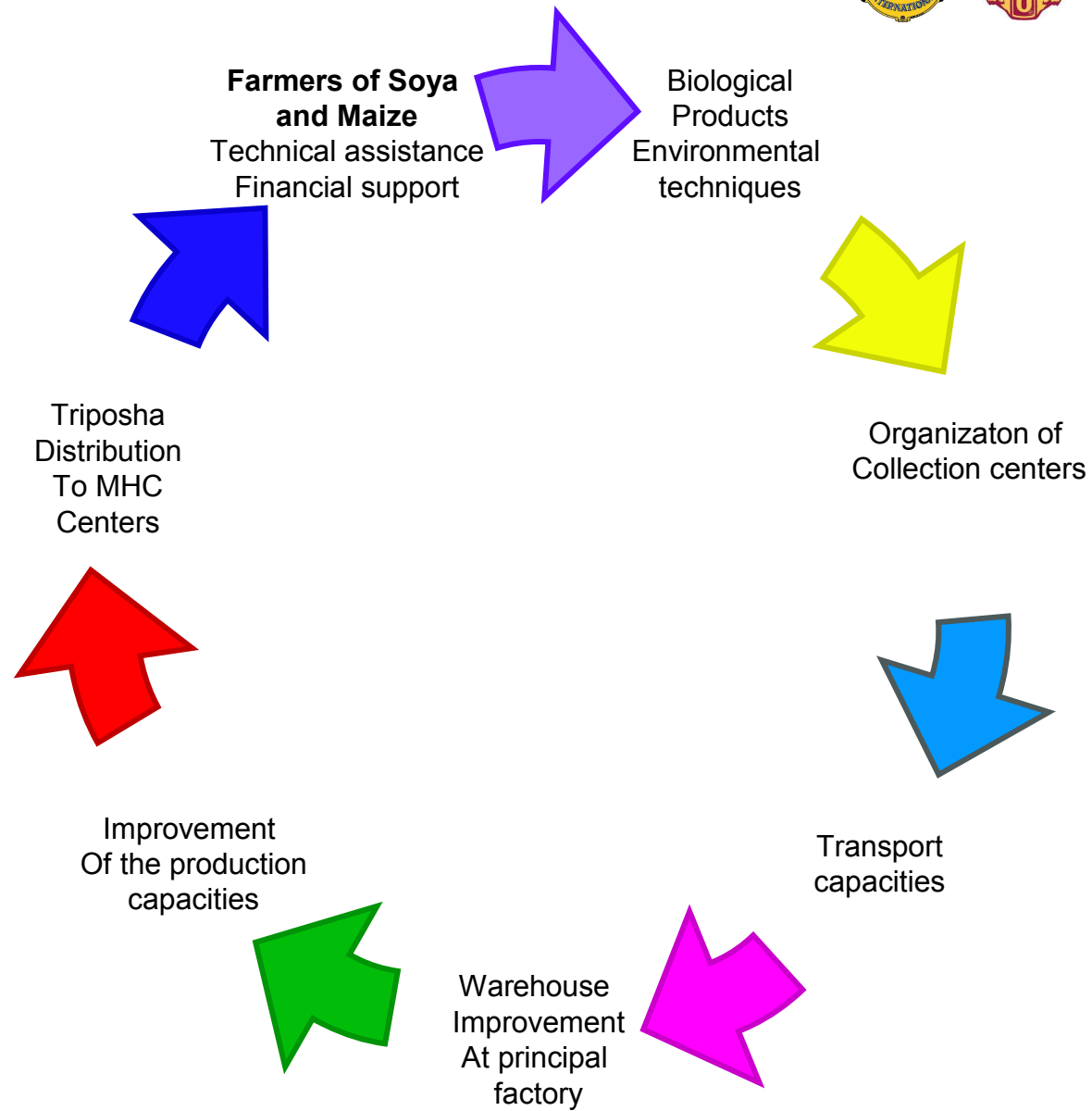


PROJECT METHODOLOGY AND BENEFITS



FINANCIAL SUPPORT FOR







PROJECT METHODOLOGY AND BENEFITS

■ For FARMERS

- Increase of production
- Improvement of the quality
- Environment protection
- Proper storages
- Collection and transport on time
- Price equity
- Better incomes
- Improvement of food intake

NUTRITION IMPROVEMENT



PROJECT METHODOLOGY AND BENEFITS

■ For the LOCAL ECONOMY

- Standardization of production
- Improvement of the quality
- Better community storages
- Organization of the local networks
- Price stabilization
- Cash movement
- Market opening (ex. Triposha factory, WFP p4p)



PROJECT METHODOLOGY AND BENEFITS

■ For the TRIPOSHA FACTORY

- Warehouse facilities
- Regular delivery of the raw material
- Quality standards
- Proper storage
- Adequate buffer stock
- Improvement of the quantity and quality of the Triposha production



OTHER OPPORTUNITIES

- Mobilization of technical resources
- Regional funds and capacity building
- EU funds
- ?



CAPACITY IMPROVEMENT PLAN



2 0 0 9

PROCESSING, PACKAGING
AND MATERIAL HANDLING

FIERA MILANO
MILAN - ITALY, 24-28 MARCH 2009



தெய்வம் / திருப்பொடி
THRIPOSHA



MANAGED BY

CTC Services Limited

A member of the B. A. T. Industries Group



CAPACITY IMPROVEMENT PLAN

PRESENTATION TO
THE REPRESENTATIVES
OF
UN WORLD FOOD PROGRAMME
25TH November 2008
By
Thriposha Management Team.

MANAGED BY
CTC Services Limited
A member of the B. A. T. Industries Group



Little bit of history....

THE PROJECT

- In 1976 manufacture of 'Thriposha' commenced in Sri Lanka by CARE Canada in collaboration with the Ministry of Health (MoH)
- In 1979 CTC was successful in bidding for the management of the production facility and was a signatory to a tripartite agreement involving the MoH and CARE Sri Lanka
- Care withdrew from the Programme in 1987 and CTC Services Ltd. continued to manage the Programme on the request of the MoH.

PROCUREMENT AND DISTRIBUTION

- Procurement of raw and packing materials is handled by MoH together with the distribution of the finished product. CTC Services Ltd. handles procurement of services and other items needed

BUDGETS AND PROCESS OF REIMBURSEMENT TO CTC Services Ltd.

- Detailed budget for capital and revenue expenditure is submitted by CTC Services Ltd. to MoH in September each year in respect of expenditure for the following year.
- Expenditure incurred by CTC Services Ltd. is reimbursed by the MoH against documents submitted together with a monthly management fee

KEY FEATURES

- Annual Budget - Rs. 750Mln. (Funding - MoH)
- Raw & Packaging Materials (85% of total expenditure)



Objective of the Thriposha Programme

- To provide a supplement which contains energy, proteins and all required micronutrients to the most nutritionally vulnerable segments of the population
 - Pregnant and lactating women
 - Infants and children from 12-59 months .
- 1. To maintain satisfactory weight gain during pregnancy.
- 2. To reduce incidence of low birth weight (LBW).
- 3. To reduce maternal mortality.
- 4. To reduce nutritional anemia among pregnant women.
- 5. To reduce third degree protein energy malnutrition (PEM) by 90% and second degree PEM by 50% in infants and pre-school children and reduce infant mortality.
- 6. To reduce underweight among children under 5 years.



The nature of the programme

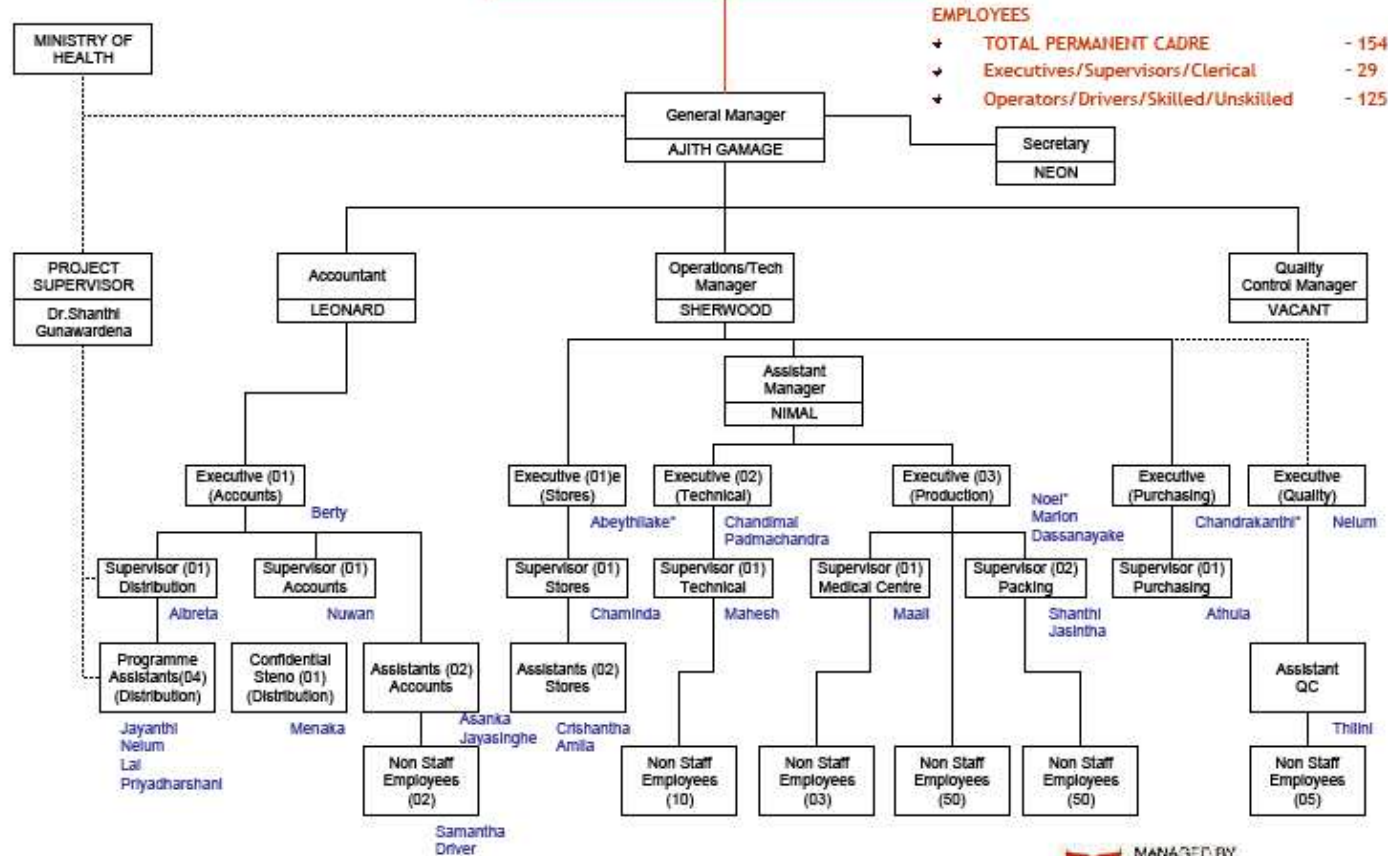
- The Programme provides a take-home dry food supplement.
- Beneficiaries are entitled to a packet (750 g) of Thriposha once every two weeks, which translates into a daily food supplement of 50 g.
 - Thriposha is one component of the MCH package of the public health sector.

Ingredients	Percentage (%)
Maize	66
Soya	30
Full cream milk powder	3
Vitamin premix	0.1
Mineral premix	0.9

Source: Government Assisted Thriposha Programme: The Nutrition Coordination Division, Ministry of Healthcare & Nutrition.



CTC Services Limited
A member of the B. A. T. Industries Group

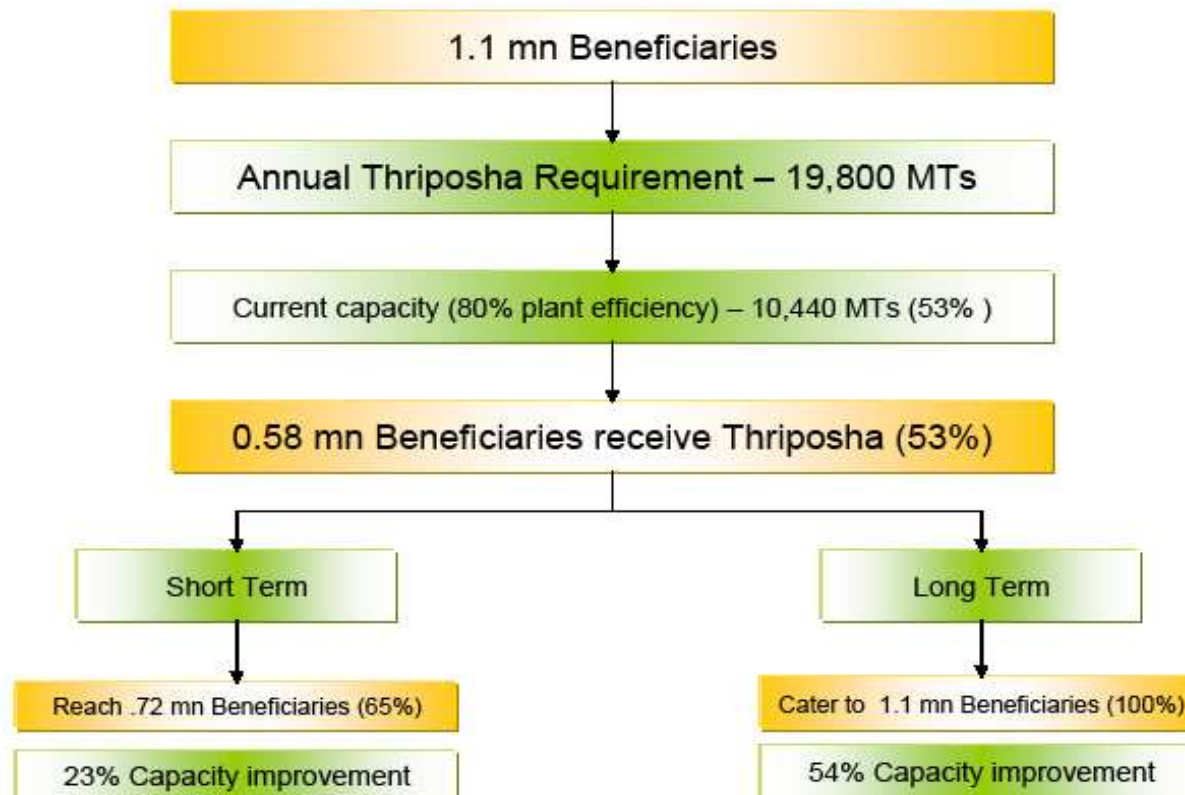




Thriposha Distribution

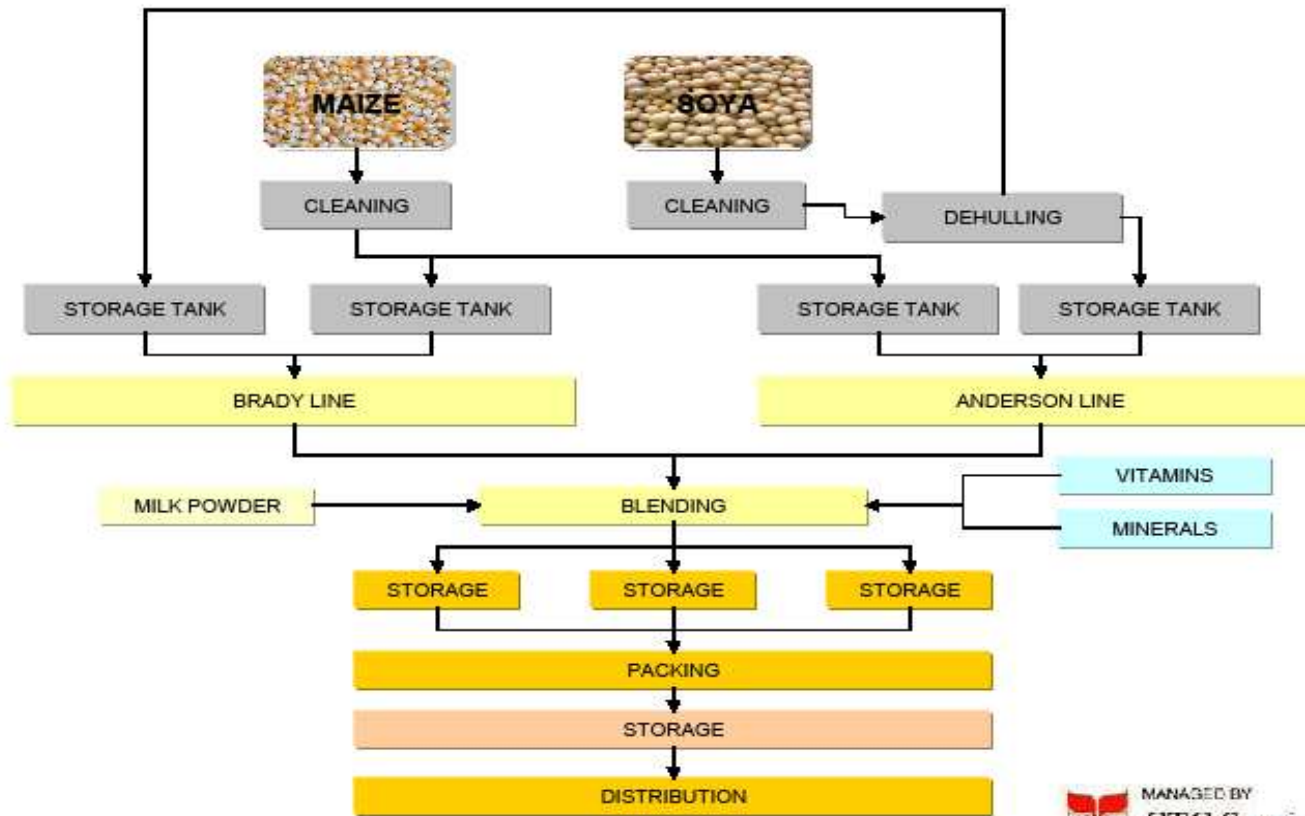
- Thriposha is issued to:
- MOH clinics;
 - Estates;
 - Probation and childcare centres;
 - Mahaweli authority;
 - Ward patients in some hospitals.

Distribution	No. of	
	Centres	Beneficiaries
Districts	25	708
Mahaweli Authority		2
Estates		449
Probation & Child Care		8
TOTAL		784031





Production Process



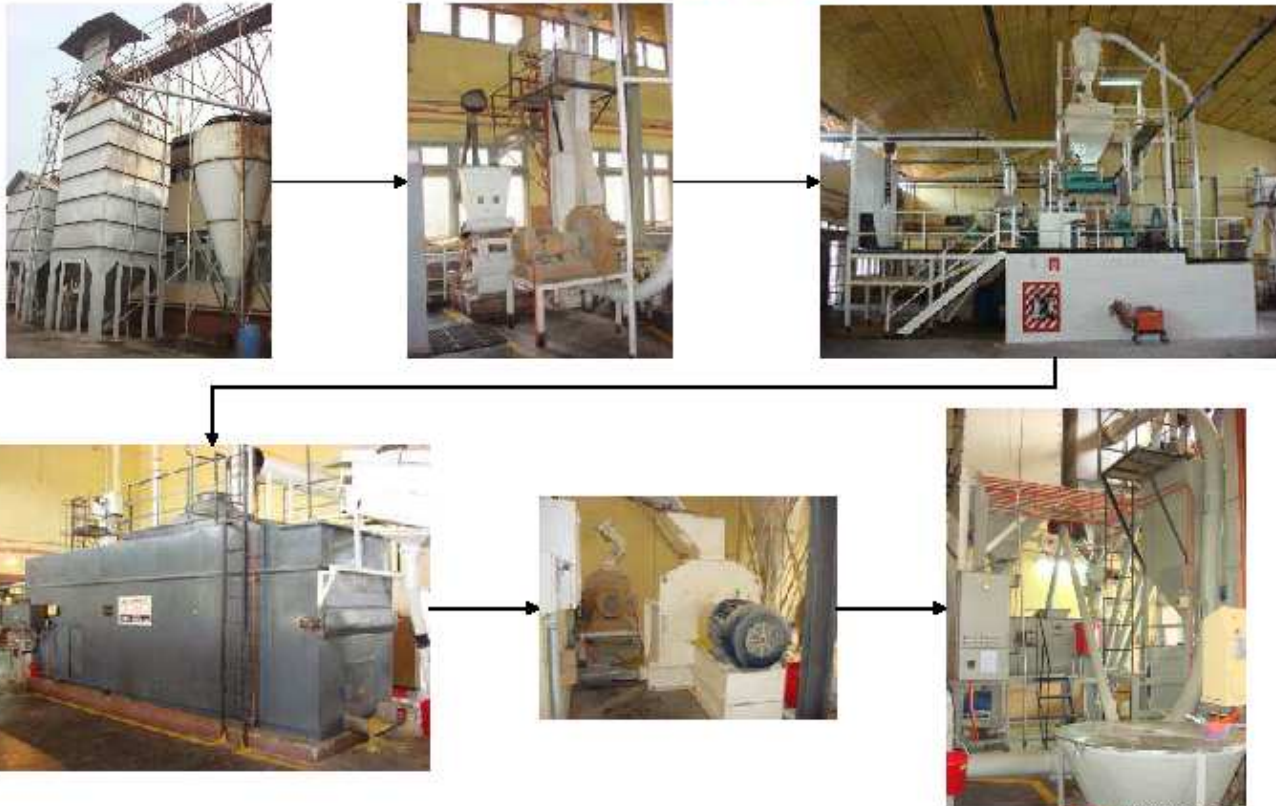


 **কুশলতা / শিশুসুখ**
THRIPOSHA





Anderson Line





Brady Line



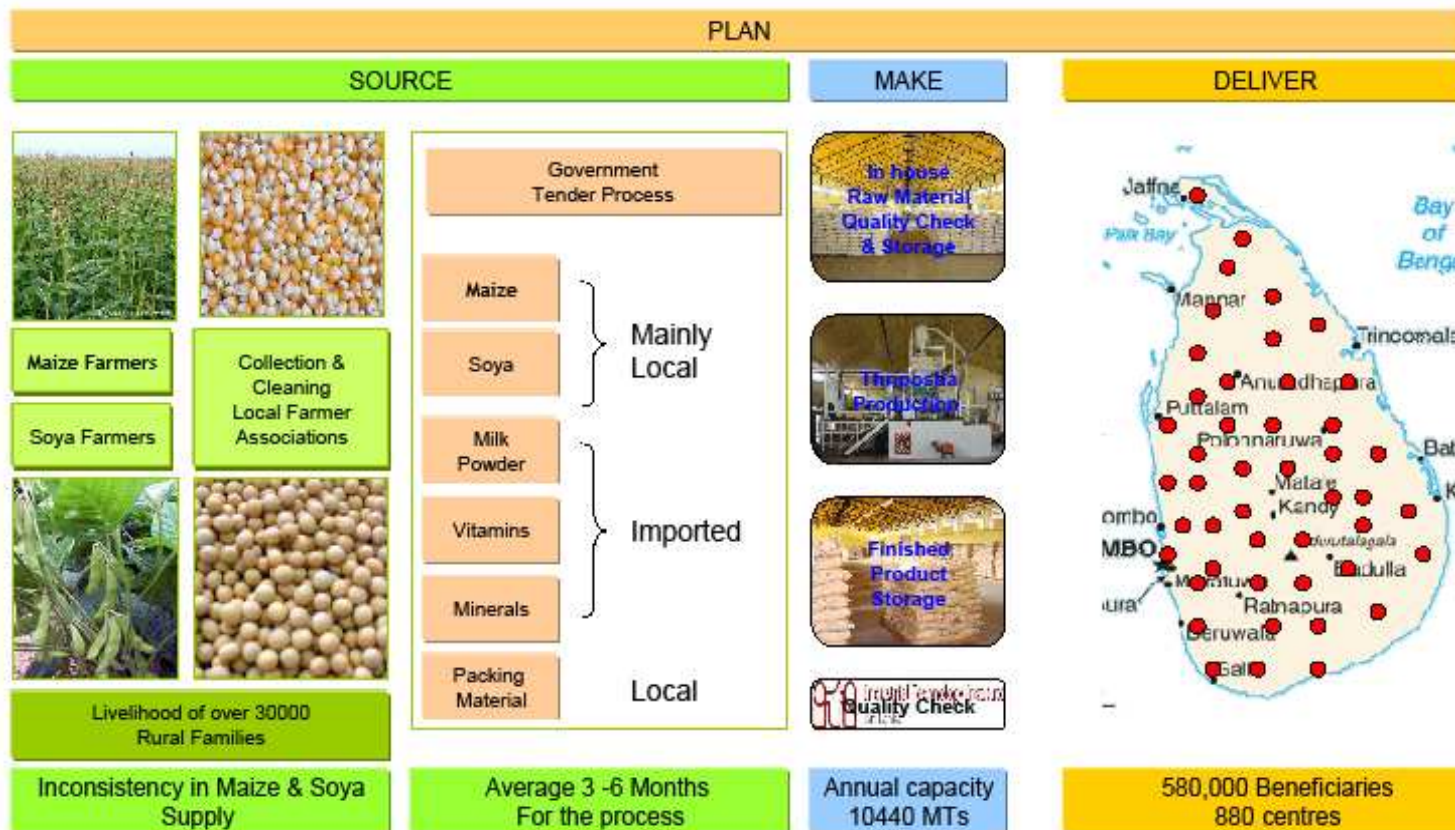


Packing and Storage





Supply Chain





Capacity Improvement Plan

Thriposha Production	Current	Short Term
Blend Size	450	450
Anderson	3.05	3.5
Brady	1	1.5
Avg. Blends per hr.	4.05	5
Avg. Production per hr.	1822.5	2250
Production per Day (Kgs)	43740	54000
No of Master Bags Per Day	1944	2400
Production per Month (MTs)	875	1080
No of Master Bags Per Month	38880	48000
Annual Production (MTs)	10498	12960
No of Beneficiaries	583200	720000
Beneficiary %	53%	65%
Capacity Increase (MTs)		2462.4
%		23%

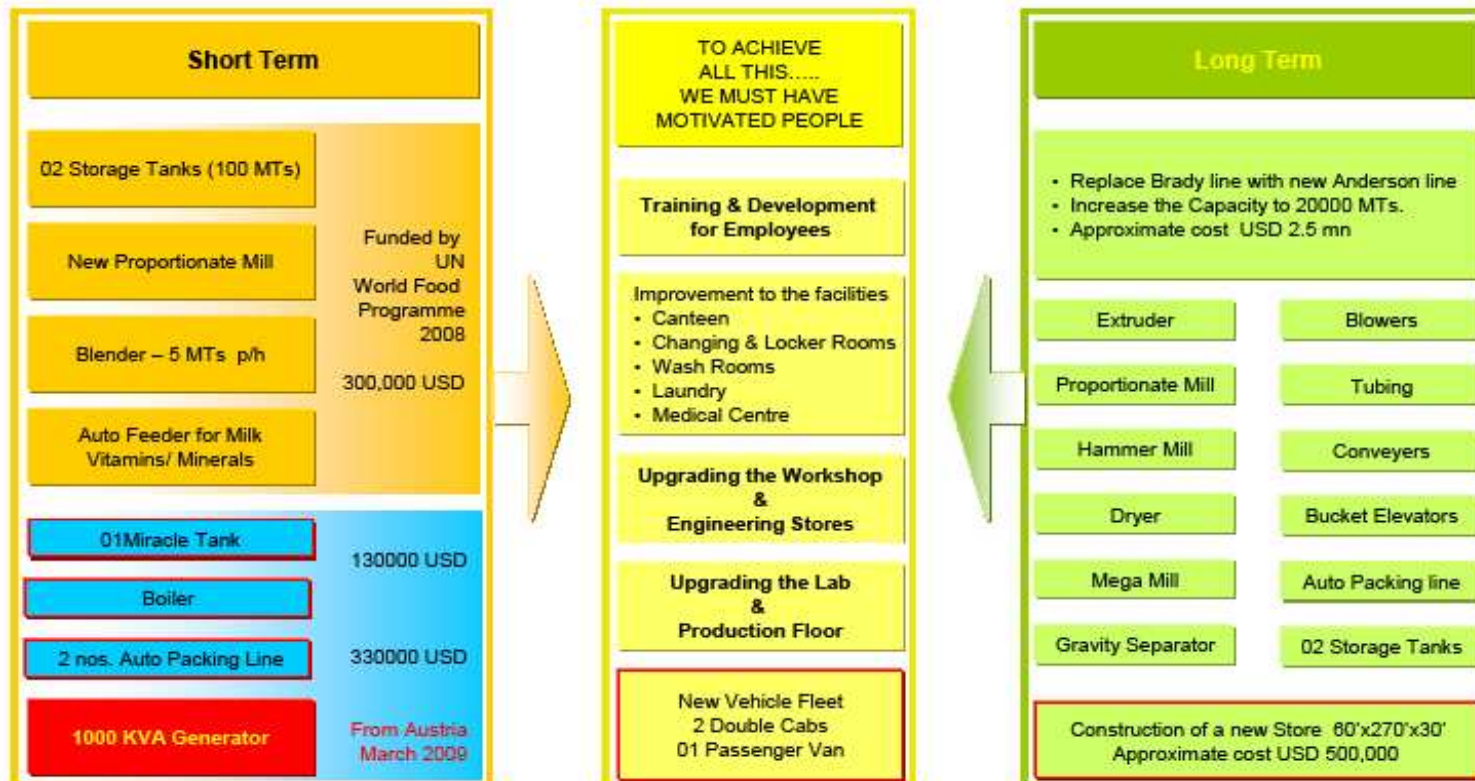


Capacity Improvement Plan

Thriposha Production	Current	Short Term	Long Term
Blend Size	450	450	450
Anderson	3.05	3.5	3.85
Anderson	1	1.5	3.85
Avg. Blends per hr.	4.05	5	7.7
Avg. Production per hr.	1822.5	2250	3465
Production per Day (Kgs)	43740	54000	83160
No of Master Bags Per Day	1944	2400	3696
Production per Month (MTs)	875	1080	1663.2
No of Master Bags Per Month	38880	48000	73920
Annual Production (MTs)	10498	12960	19958.4
No of Beneficiaries	583200	720000	1108800
Beneficiary %	53%	65%	101%
Capacity Increase (MTs)		2462.4	6998.4
%		23%	54%



Our Needs....





Proposed Factory Layout

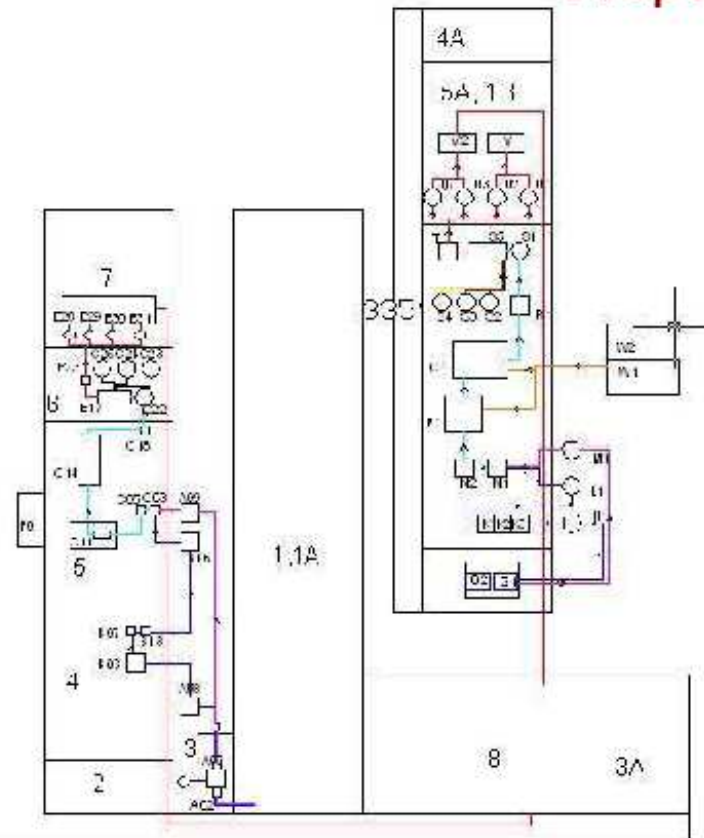


Fig. 2 Proposed Factory layout for Triposha Factory Ja-Ela



Summary of the Short Term Requirement

ITEM	Cost	
	USD	Euro
01 Miracle Tank	20,000	15,714
Boiler	110,000	86,429
2 Automated Packing Lines	330,000	259,286
New Store	500,000	392,857
1000 KVA Generator	410,000	322,143
Replacement of 3 Vehicles	275,000	216,071
Total	1,645,000	1,292,500

Thank You



ESTIMATED BUDGET FOR THE ITEMS REQUIRED FOR THE CAPACITY IMPROVEMENT OF THRIPOSHA FACTORY - JA-ELA, SRI LANKA.

Priority list

No.	ITEM	MODEL	Estimated cost USD	Supplier Details	Remarks
1	Anderson Extruder		125000	ANDERSON INTERNATIONAL CORPORATION 6200 Havard Avenue Cleveland, OHIO 44105-4896 Tel: 216-641-1112 Facsimile 216-641-0709	1st stage
2	Mega Mill	MM-18	60000	PARTICLE MANAGEMENT SOLUTIONS	
3	TEFC Motor	100HP	10000	2 Sammons Court, Bolingbrook, IL 60440	
6	Belt-o-matic model 320B dryer/cooler		70000	B.N.W. Industries 7930 N. 700 E. Tippecanoe, IN. 46570 USA Office 574-353-7855 Fax 574-353-8152 Email sales@belt-o-matic.com	
7	02 nos. Mix-Mill Hammer Mills		70000	713 W LAFEVER, OSSIAN, IN 46777 USA (260) 622-7831 1(800) 537-6260 FAX (260) 622-4798 www.atferrel.l.com info@atferrel.l.com	
15	Blower		20000		
16	Bucket Elevators				
17	Tubing		30000		
18	Convayers				
8	Miracle Tank for Thriposha Powder Storage – Capacity 10 Metric Tons		17000		
10	Boiler (4 Tone)	CBLE100-250-200ST	110000	Cleaverbrookes, USA	2nd stage
4	Mega Mill	MM-9	40000	Ph: 630-759-9595 Fx: 630-759-6099	3 &4th stage
5	TEFC Motor	40 HP	4000	www.prater-sterling.com	
14	Gravity Separator	90 - V	40000	Forsberg Company, UK, www.forsbergs.com	
20	02 nos Battery Operated FolkLifts (5 Tone)	RX60-50	160000		
9	02 Nos. Fully Automatic Form Fill & Seal Machines for Thriposha Packing	LX-52	314000		5th stage
19	Centralised Vacume Cleaner Unit	EF125i	154545	Cardwele Company, UK	6th stage
21	02 nos. 25kg Washing Machines	Fully Auto	5000		
22	02 Double Cabs		180000	Including Duty	7th stage
23	01 Car			Including Duty	
11	02 nos Storage Tanks (100 MTs each)		180000	Sukup, USA, www.sukup.com	WFP
12	Nutri Blender		70000		
13	Auto feeder for Milk, Vitamins and Minerals		42000		
Total Estimated cost of the Items			1.701.545,00		

RIEPILOGO PRIORITA'	USD	€ (al cambio \$1,30)
1st stage	\$402.000	309.231 €
2nd stage	\$110.000	84.615 €
3 &4th stage	\$244.000	187.692 €
5th stage	\$314.000	241.538 €
6th stage	\$159.545	122.727 €
7th stage	\$180.000	138.462 €
WFP	\$292.000	224.615 €
TOTALE	\$1.701.545	1.308.881 €



WFP by Numbers

2006 2007 KEY NUMBERS

MILLENNIUM DEVELOPMENT GOAL 1 Eradicate extreme poverty and hunger

2006	2007	DESCRIPTION
87.8	86.1	BENEFICIARIES million hungry people in 80 countries (78 in 2006)
24.3	23.8	million in development projects (DEVs)
16.4	15.3	million in emergency operations (EMOPs)
(7.7)	(8.1)	- million in conflict situations
(7.9)	(7.2)	- million in natural disasters
47.1	47.0	million in protracted relief and recovery operations (PRROs)
72.9	71.6	million women and children
1.9	1.9	million refugees
7.2	8.8	million internally displaced people (IDPs)
1.2	0.8	million returnees

2006	2007	DESCRIPTION
4.0	3.3	QUANTITY OF FOOD AID million mt of food distributed
2.0	2.1	million mt of food procured

2006	2007	DESCRIPTION
9	6	APPROVED PROJECTS IN 2007* country programmes (CPs) valued at US\$116 million
1	10	DEVs, valued at US\$105 million
20	32	EMOPs/Immediate Response Account (IRA), valued at US\$880 million
18	31	PRROs, valued at US\$2.1 billion
15	14	special operations (SOs) valued at US\$59 million

2006	2007	DESCRIPTION
2.705	2.705	INCOME AND EXPENDITURES (US\$ billion) in contributions received
2.932	3.029	in income
2.664	2.753	in direct expenditures
2.876	2.966	in total expenditures

2006	2007	DESCRIPTION
90.6	88.5	DEVELOPING COUNTRIES AND WFP ASSISTANCE percent of allocated development multilateral resources meeting country concentration criteria
68.8	74.0	percent of allocated development resources reached LDCs
77.0	79.4	percent of food procured, by tonnage, in developing countries
73.9	72.0	percent of WFP's assistance invested in sub-Saharan African countries

ACTIVE PROJECTS IN 2007

CPs	35
DEVs	19
EMOPs	44
PRROs	69
SOs	33
TOTAL	200

* Case not included